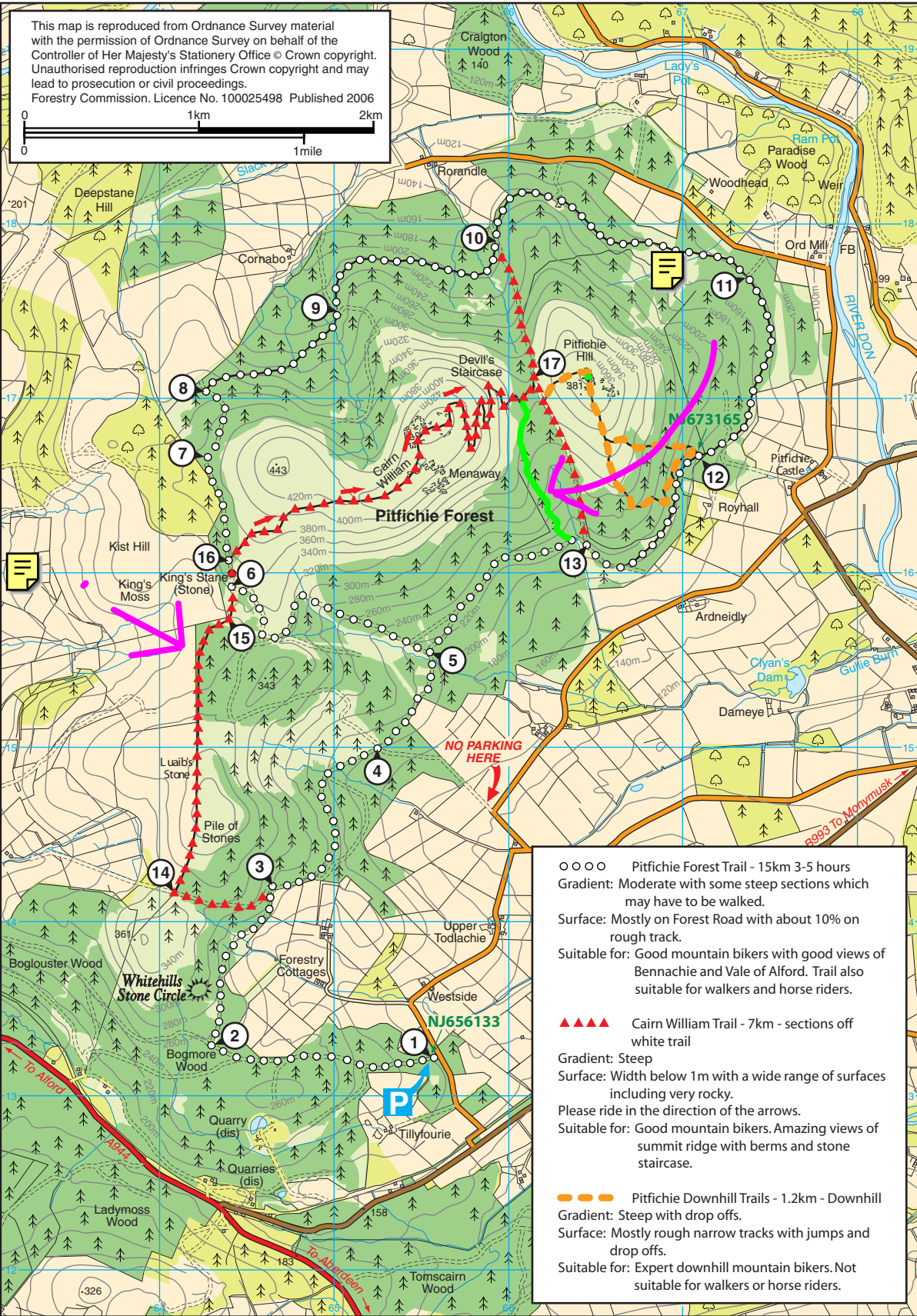


PITFICHIE



This map is reproduced from Ordnance Survey material with the permission of Ordnance Survey on behalf of the Controller of Her Majesty's Stationery Office © Crown copyright. Unauthorised reproduction infringes Crown copyright and may lead to prosecution or civil proceedings. Forestry Commission. Licence No. 100025498 Published 2006

0 1km 2km
0 1mile

- ○ ○ ○ Pitfichie Forest Trail - 15km 3-5 hours
Gradient: Moderate with some steep sections which may have to be walked.
Surface: Mostly on Forest Road with about 10% on rough track.
Suitable for: Good mountain bikers with good views of Bennachie and Vale of Alford. Trail also suitable for walkers and horse riders.
- ▲ ▲ ▲ ▲ Cairn William Trail - 7km - sections off white trail
Gradient: Steep
Surface: Width below 1m with a wide range of surfaces including very rocky.
Please ride in the direction of the arrows.
Suitable for: Good mountain bikers. Amazing views of summit ridge with berms and stone staircase.
- — — — Pitfichie Downhill Trails - 1.2km - Downhill
Gradient: Steep with drop offs.
Surface: Mostly rough narrow tracks with jumps and drop offs.
Suitable for: Expert downhill mountain bikers. Not suitable for walkers or horse riders.

**NO PARKING
HERE**

B993 To Monymusk

To Alford

To Aberdeen